

# MASS HYSTERIA

Lighting Designer : Nicolas Riot

Email : riotnicolas@yahoo.fr

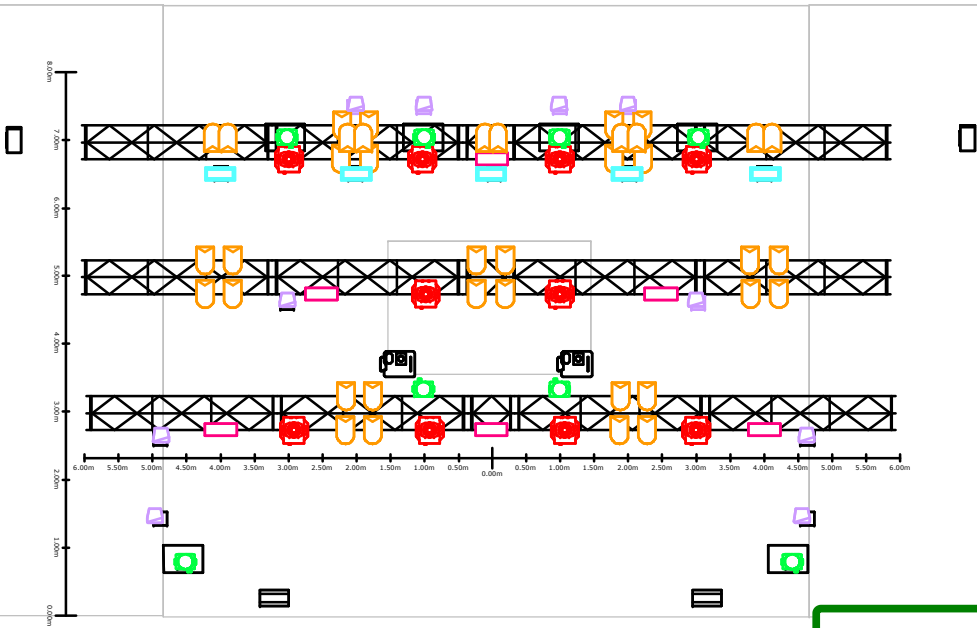
Cell : +33 672 438 056



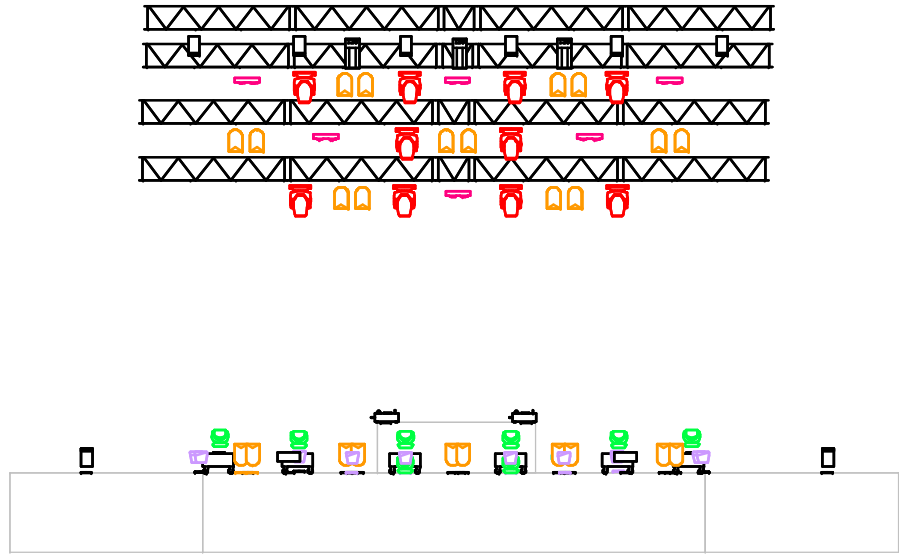
Symbol	Name	Count
	Strob 1500W	2
	Par 64 CP60	38
	Unique 2	2
	Alpha Spot HPE 700 Plan	10
	FL 1300	6
	Wash : JB A8 ou MAc Aura	8
	Atomic 3000	5
	Par Leds	10
	Geyser RGB Plan	2
	Decoupe 1kW	3
	T10 750W	4



Top view

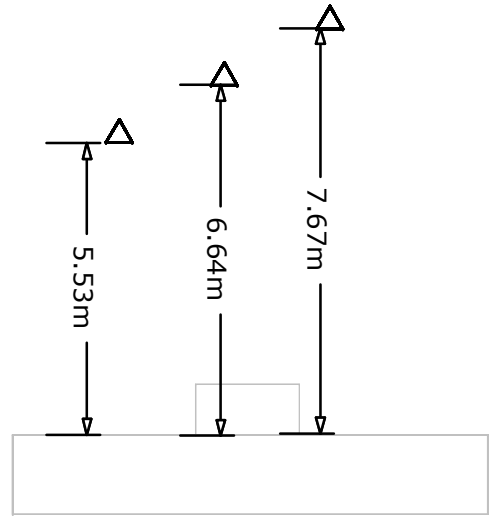


Front view

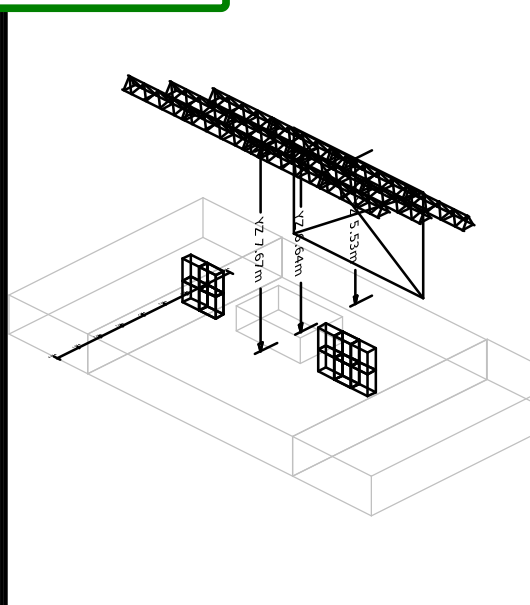


**LIGHT PLANS**

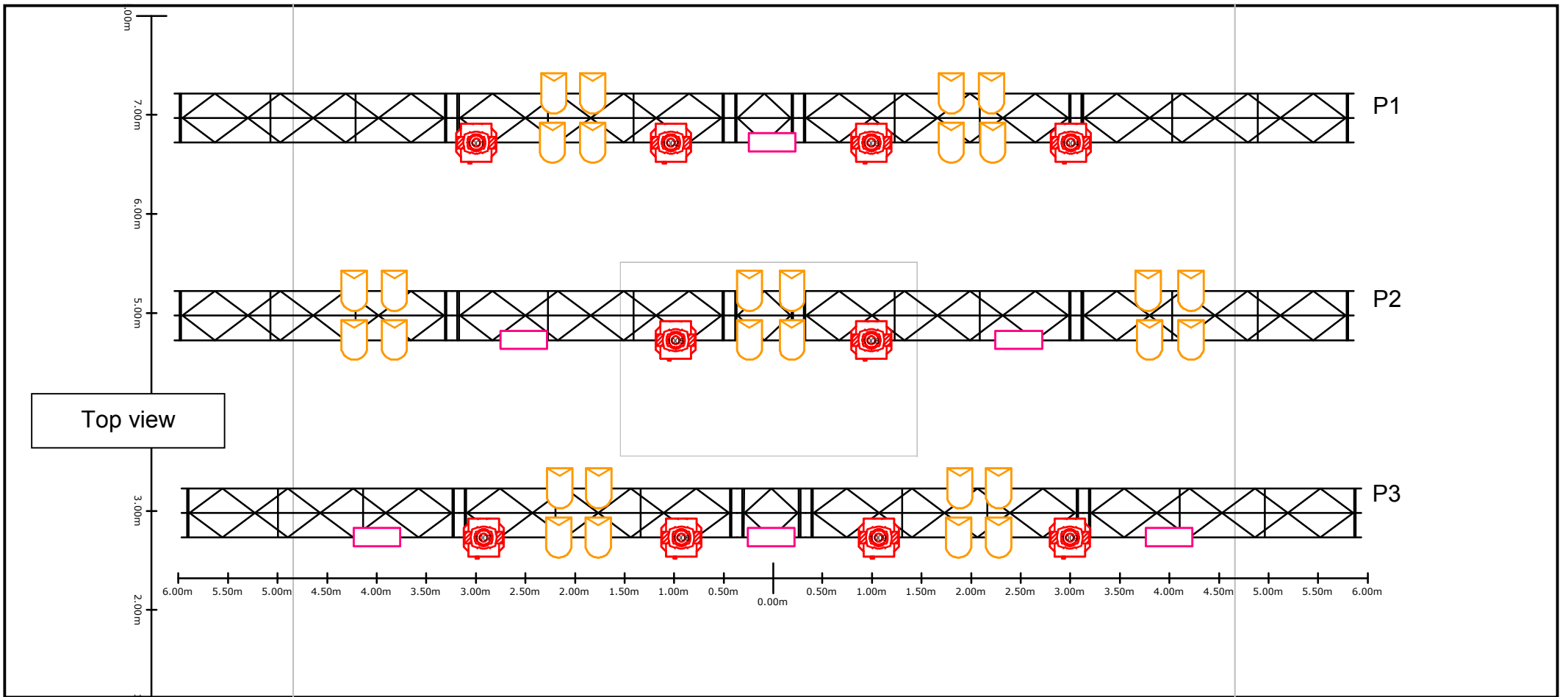
Side view



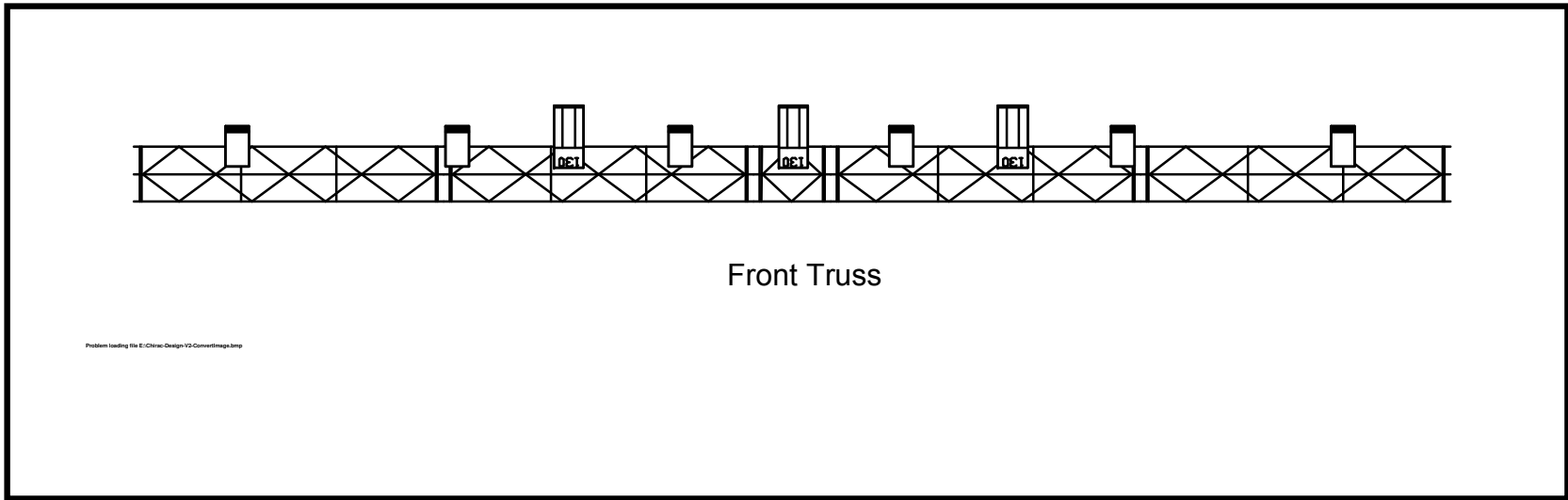
*Phirac design*



Symbol	Name	Count
	Strob 1500W	2
	Par 64 CP60	38
	Unique 2	2
	Alpha Spot HPE 700 Plan	10
	FL 1300	6
	Wash : JB A8 ou MAc Aura	8
	Atomic 3000	5
	Par Leds	10
	Geyser RGB Plan	2
	Decoupe 1kW	3
	T10 750W	4



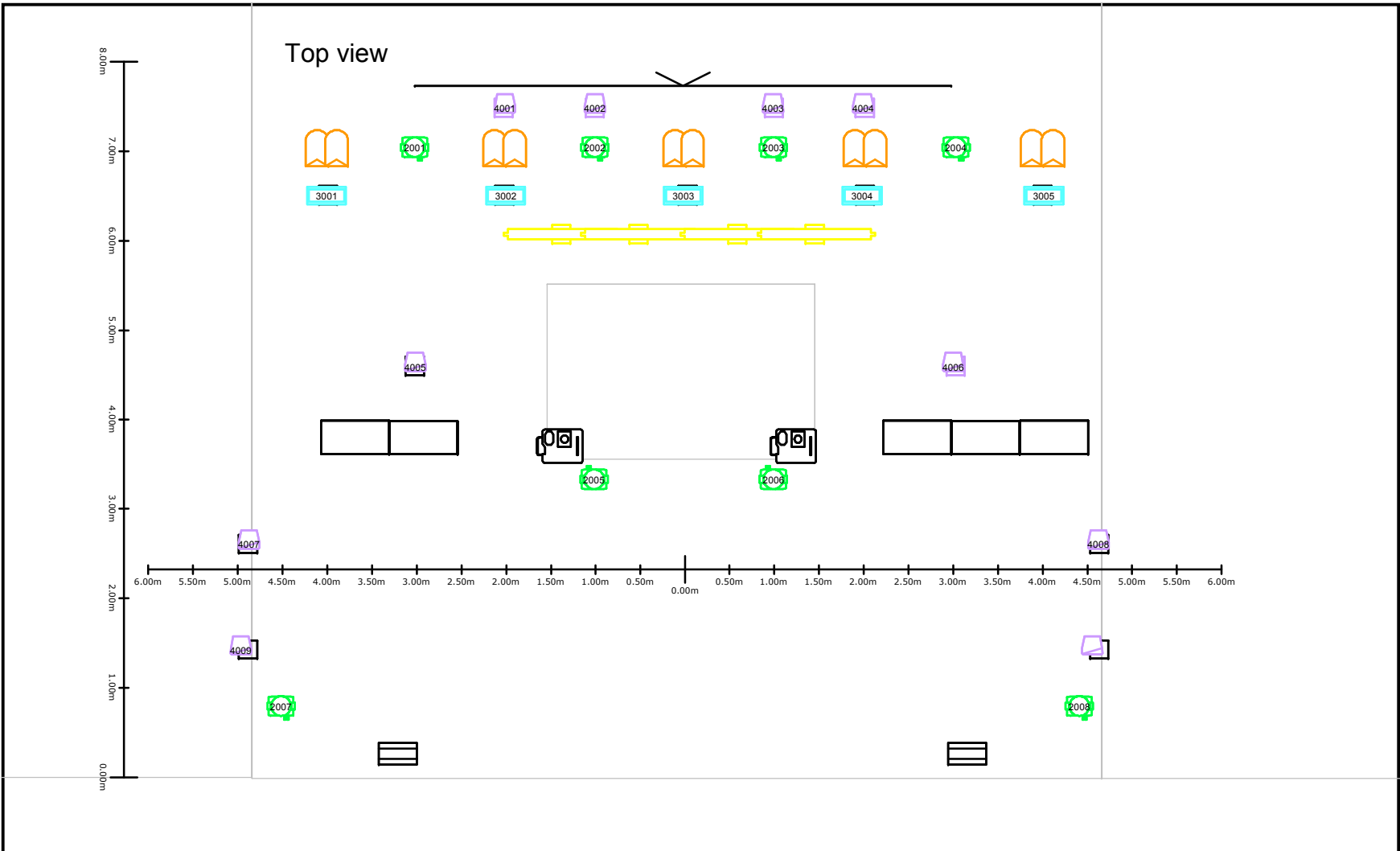
Top view



Front Truss

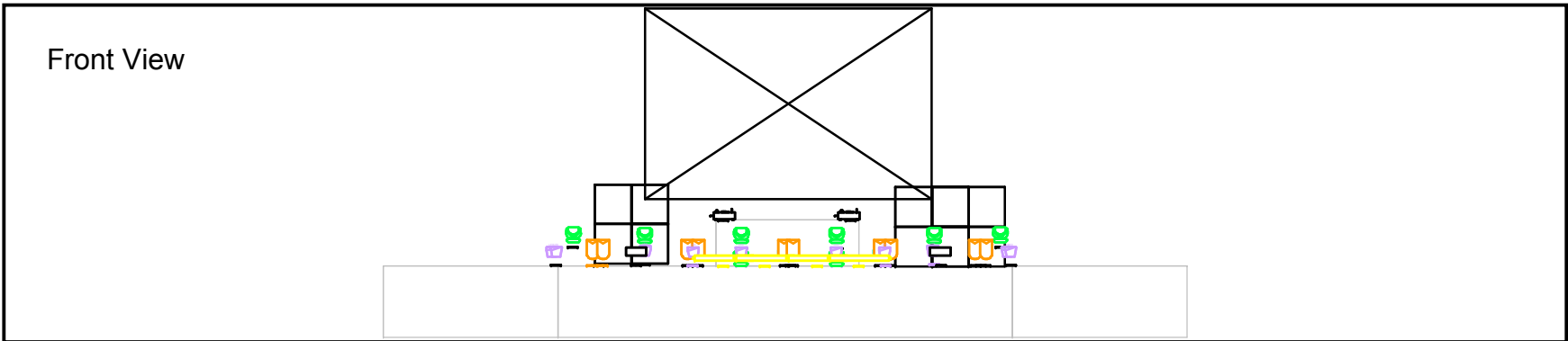
Symbol	Name
	Par 64 CP 60
	Alpha Spot HPE 700
	FL 1300
	PC 1kW
	Decoupe 1kW

**TRUSS**



Symbol	Name
	Par 64 CP60
	Wash
	Atomic 3000
	Par Led
	Geyser RGB
	Strob 1500w
	T10 750W

*Chirac design*












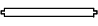
**FLOOR**



Lighting Designer : Nicolas Riot

Email : riotnicolas@yahoo.fr

Cell : +33 672 438 056

Symbol	Name	Count	Notes
	Alpha Spot HPE 700	10	
	USITT Par 64 WFL	38	
	A8	8	
	X-5 strob led	5	
	Par Leds	10	
	Geyser RGB	2	-Matériel fourni par Mass Hysteria-
	Strob 1500w	2	-Matériel fourni par Mass Hysteria-
	Sel Compact PC	7	
	HPS 130	3	
	T10 750W	4	-Matériel fourni par Mass Hysteria-

-Tous les circuits traditionnels sont câbles SOLO; exception faites des PC de la face.

**-Vous fournissez également une console GRAND MA2 ultralight. Le modèle est non négociable.**

**-Pour les équivalents sur les spots et les washs : TRICHROMIE Obligatoire.**

-Les washs au lointain seront sur-élevés de 1.50m

-Merci de prévoir les directs 16A et datas pour le matériel fourni par Mass Hysteria

-Prévoir l'accroche pour le backdrop : 6m X 4m

-Prévoir une machine à brouillard adaptée au lieu.